

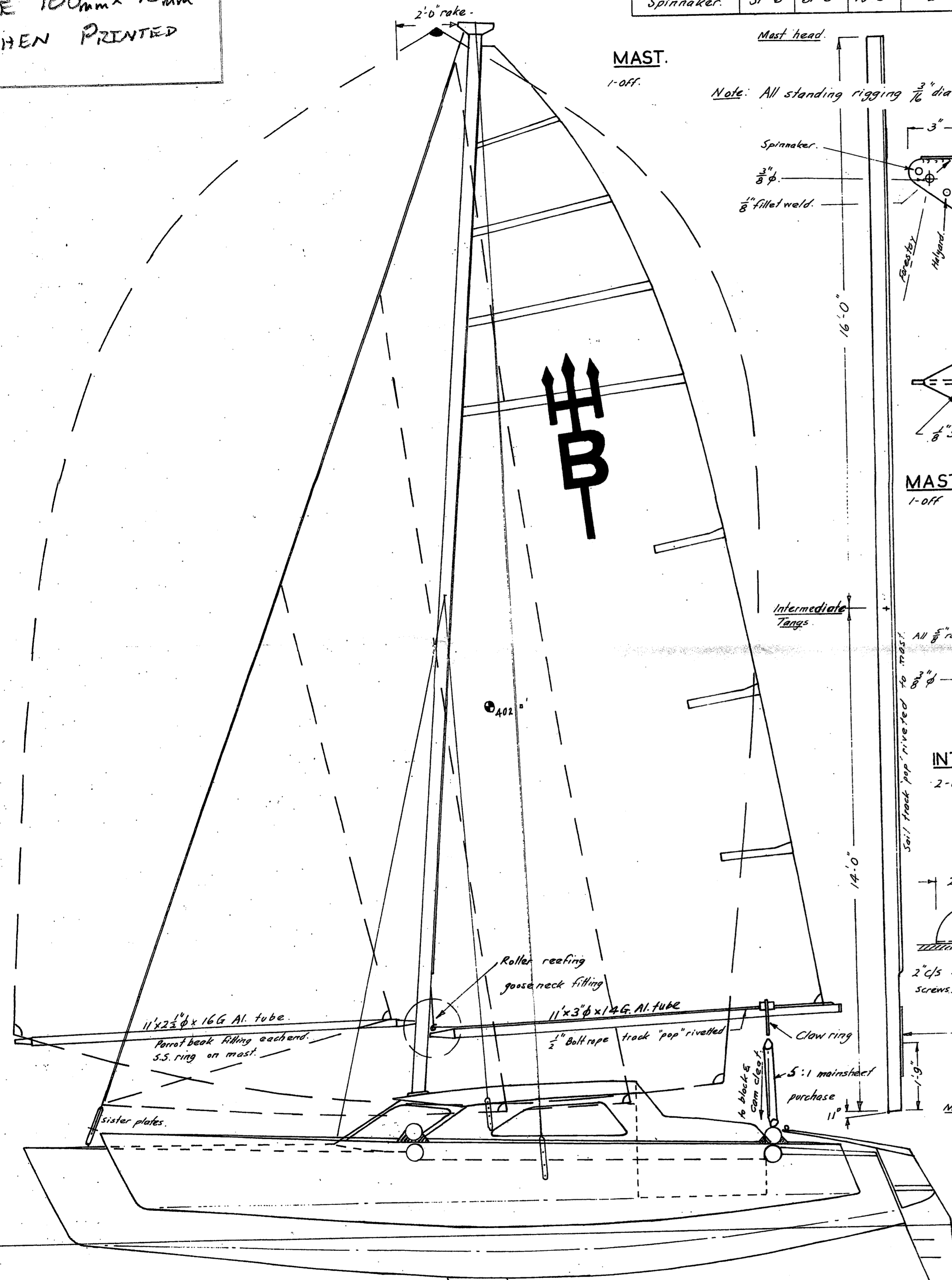
BUCCANEER

Design by Lock Crowther.

Sheet 6.

SCALE MUST BE 100mm x 75mm WHEN PRINTED

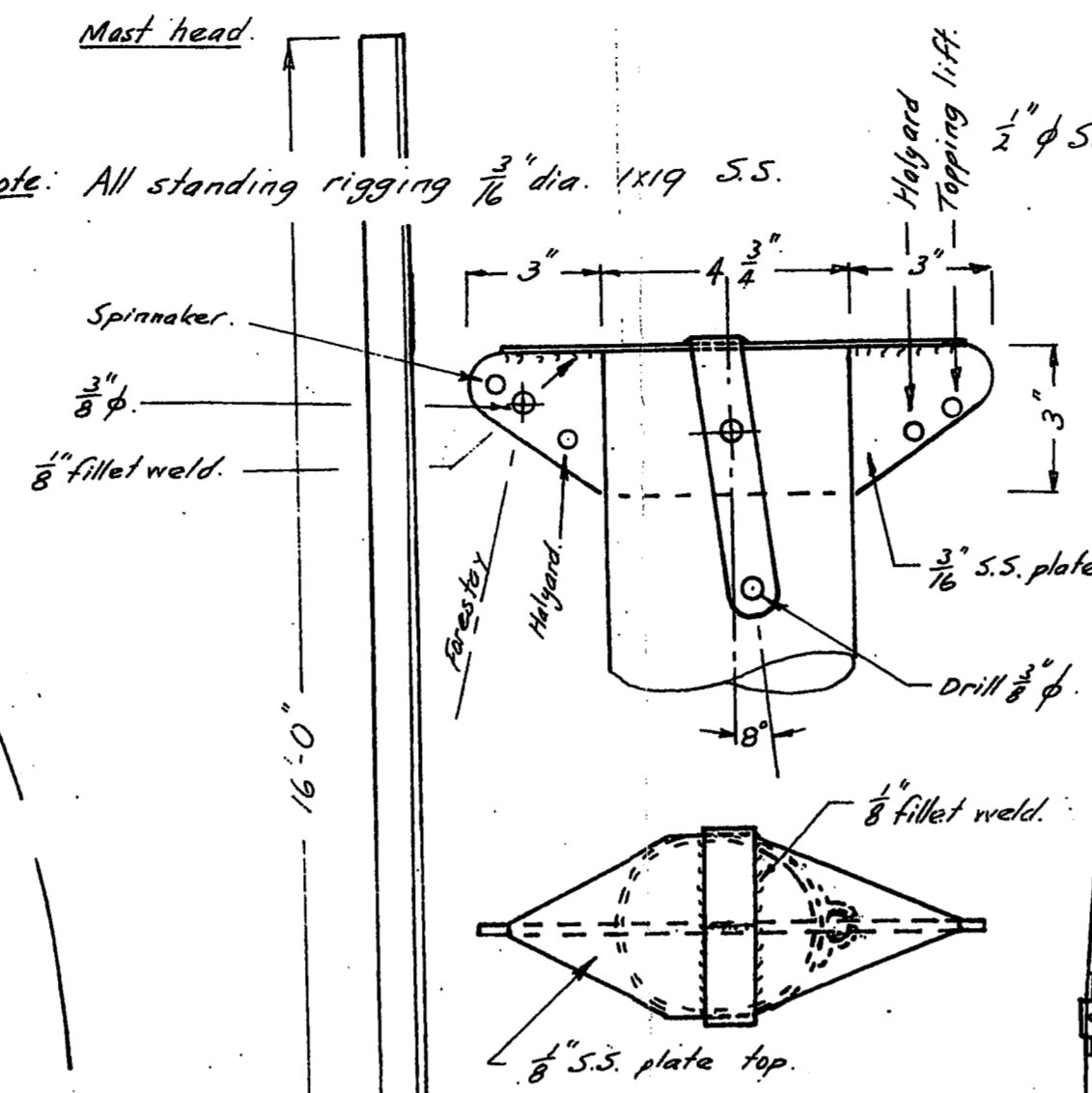
No. 1 Jib.	15'-3"	12'-6"	8'-3"	8		51	
No. 2 Jib.	23'-9"	23'-0"	11'-2"	8		126	
Genoa	30'-6"	29'-4"	14'-7"	8	4°-vt	212	
Mainsail.	27'-4"	28'-4"	11'-0"	10	2'-2"	190	Max Roach located 75% up leech.
Spinnaker.	31'-6"	31'-6"	19'-9"	1 1/2		~430	



MAST.

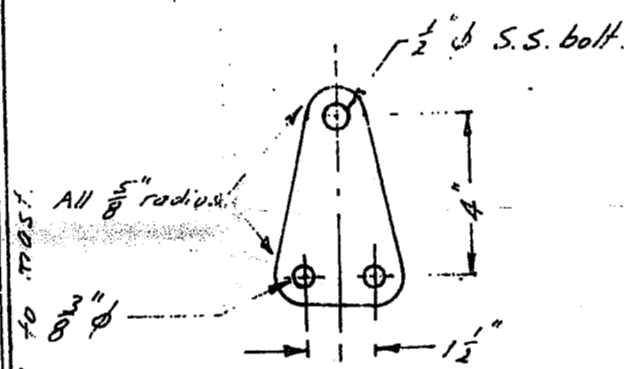
1-off.

Note: All standing rigging 3/16" dia. 1x19 S.S.



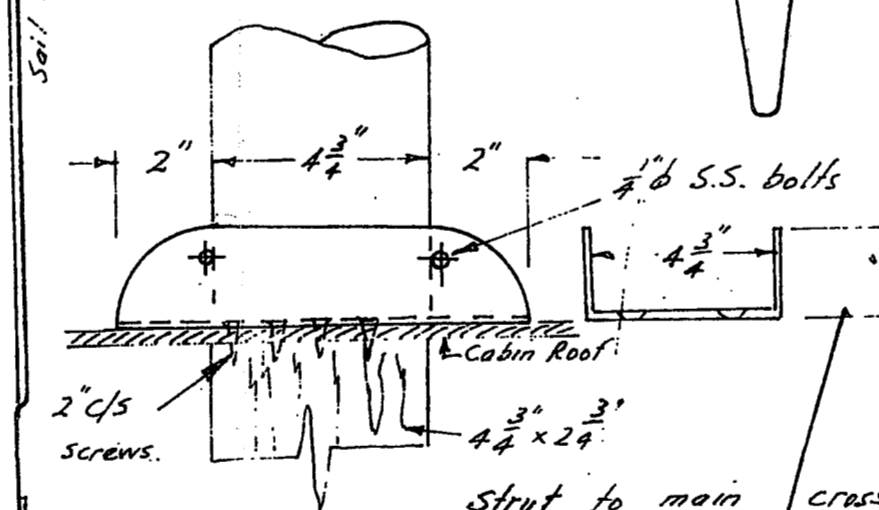
MASTHEAD FITTING.

1-off Stainless Steel.



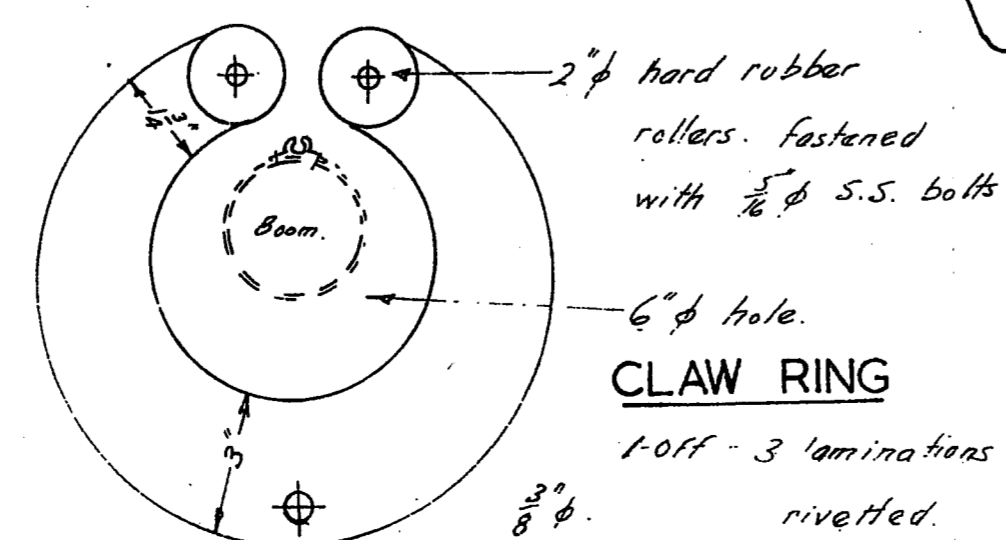
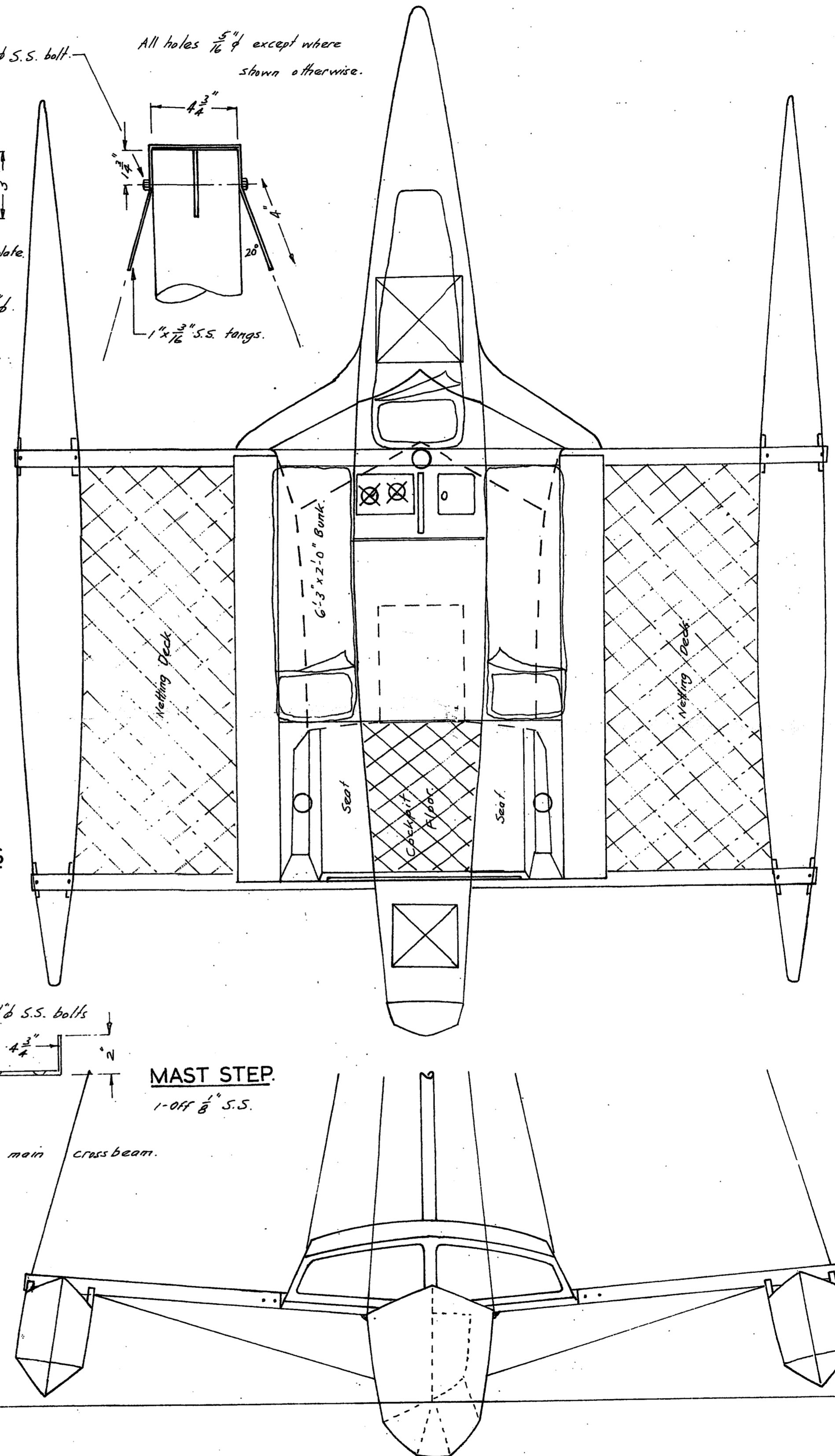
INTERMEDIATE TANGS

2-off 1/2" S.S.



MAST STEP.

1-off 1/2" S.S.



CLAW RING

1-off - 3 laminations 3/16" Aluminum rivetted.

Construction - Main hull - Double

Specification

L.O.A. 24'-0" 7.32 m

Hoodroom 4'-9" - 5'-3"

Chine 1/8" ply, HANG, MARINE OR 1/4" EXT. FIR.

L.W.L. 23'-0" 7.01 m

Berths 6' x 2'

Floats - Single Chine 1/8" ply

Beam 19'-0" 5.79 m

Main hull beam 3'-0"

Cabin 1/4" and 5/8" ply

Soil Area - Racing - 402 sq'

Features - dagger board

Crossbeams and mast. 1/4" x 104

- Cruising 320 sq'

Swing up rudder.

Al. tube.

- Spinnaker ~ 430 sq'

Dolphin braces 1 1/2" x 3/8" S.S.

Trailerable via bolted connections.

1" = 0.00254 m @ 2.54 cm

1 ft = 0.3048 m